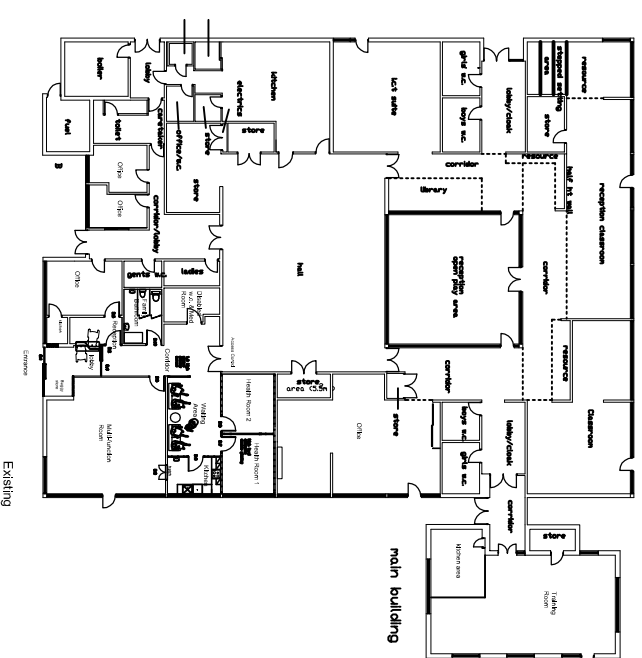
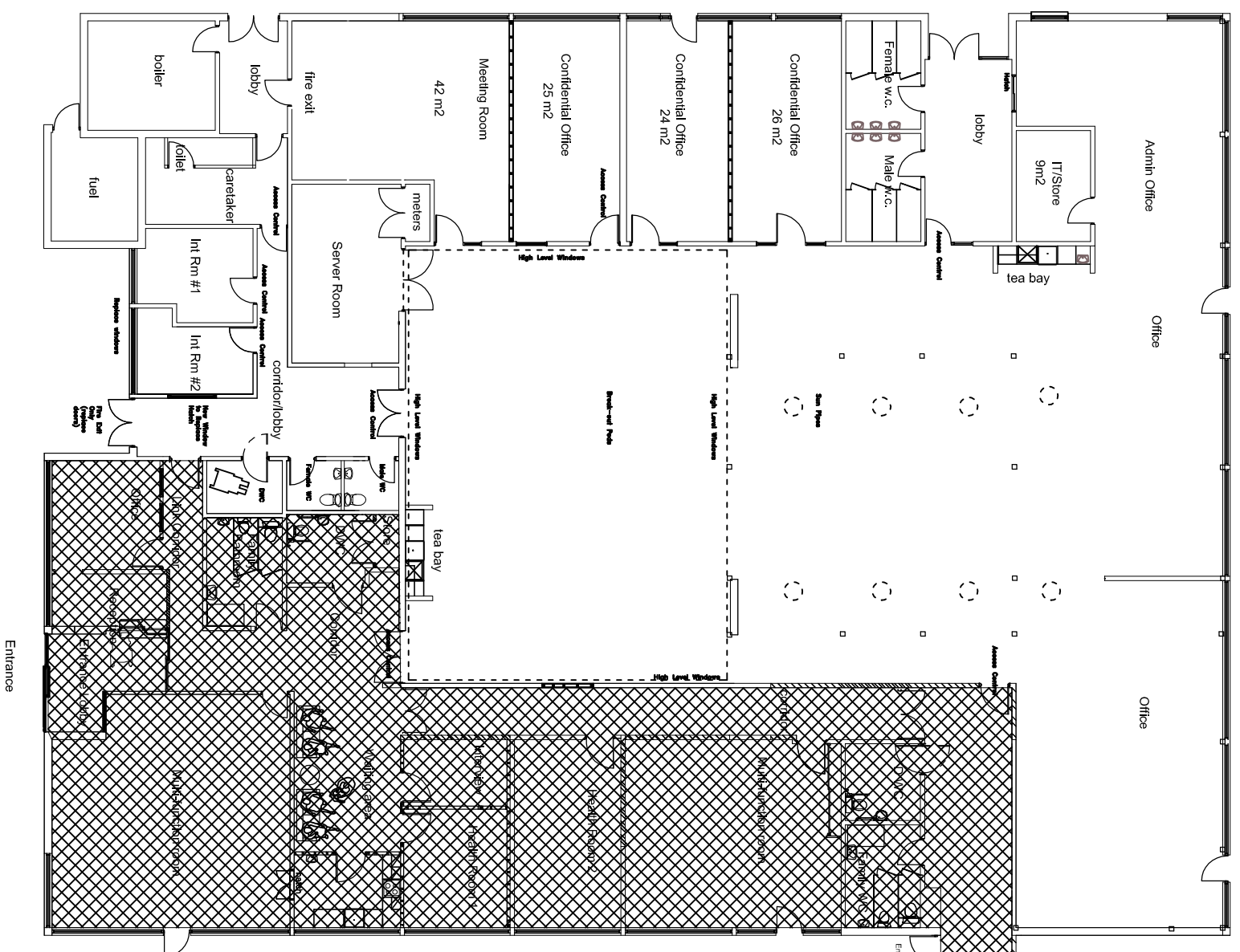


NOTES
 WRITTEN DIMENSIONS TO BE PREFERRED TO SCALED.
 ANY / ALL ORDNANCE SURVEY DATA IS REPRODUCED FROM THE ORDNANCE SURVEY MAP WITH THE PERMISSION OF THE CONTROLLER OF HER MAJESTY'S STATIONERY OFFICE. CROWN COPYRIGHT RESERVED.
 METROPOLITAN BOROUGH OF WIRRAL LA 076430



EXISTING FLOOR PLAN 1:500

Existing Children's Centre



PROPOSED FLOOR PLAN 1:200

Notes

General Works
 Amend Fire and Security Alarms required to suit new layout. Separate zoning for Children's Centre and Offices.
 New Boiler for heating and hot water required and replacement of fan convectors with radiators.
 Lift equipment with new floor, roof and support for high level doors. New double doors all stairs reference to high level windows. New ventilation to open plan office space.

Area Team
 Form partitions and FDD's doors and 1/2 hr glazing as shown. Fit out Offices and meeting areas with power and Cat 6 data sockets to suit workstations as shown, and redecorate throughout with new lighting, flooring and blinds.
Front of House
 Form new corridor from W/C's with partitions and doors as shown.
 Re-decorate with new flooring and lighting. Fit out and redecorate throughout with new lighting & flooring.
 All Corridors and Entrance - fit new lighting, flooring and redecorate. Replace suspended ceiling and fit new cleaning sockets if required.
 General throughout the building - allowance for blinds, furniture and equipment, fittings and power/data to be made.

Kitchen Fittings
 Fit hot by units with 14500 sink base unit and 1 x 4500 base unit with end panels to appropriate spaces. Also 1 x 1000 wall unit, ss heat sink and drainer, 2 x 650mm appliances spaces with fused switched spur above and socket under for dish washer (including water and waste plumbing) and fridge. 40mm solid grade laminate worktop cover. Hydrocall over sink for hot office. Fit 2 cabinet doors for storage. 1 x 1000 wall unit with 1 x 4500 vinyl flooring to dotted area and 450mm high tiled splashback and decorate as required.

W/C's
 W/C's throughout to be refaced with wall height w/c (end urinals where shown) and cabinets as required and new w/h to suit. Fit dual flush w/c's and push tips on all basins.
 Redecorate all W/C's and re-tiler if required. Allow for new cabinets from Millington's floor range.

REV	DATE	INITIALS	CHECK

Metropolitan Borough of
WIRRAL
 TECHNICAL SERVICES DEPARTMENT
 Chesilme Lines Building
 Cheshire Street, Birkenhead,
 Wirral, CH41 1ND.
 T: 0151 425 2100
 F: 0151 - 606 2188
 e-Mail: technicalservices@wirral.gov.uk

PROJECT
**PENSBY CHILDREN'S CENTRE
 FISHERS LANE, PENSBY
 CH61 8SD**

DRAWING TITLE
**PROPOSED CONVERSION TO OFFICES
 FOR CO-LOCATION OF STAFF**

DRAWN GM	CHECKED	DRAWING NO. C18649/SK04	REV.
SCALE As Shown	UPRNT NO. 131001472000	DATE JULY 2010	

O.A. DOCUMENT REFERENCE: 249.5-B (27 JANUARY 2005)